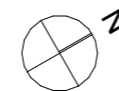
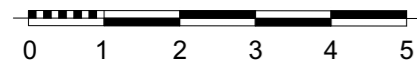
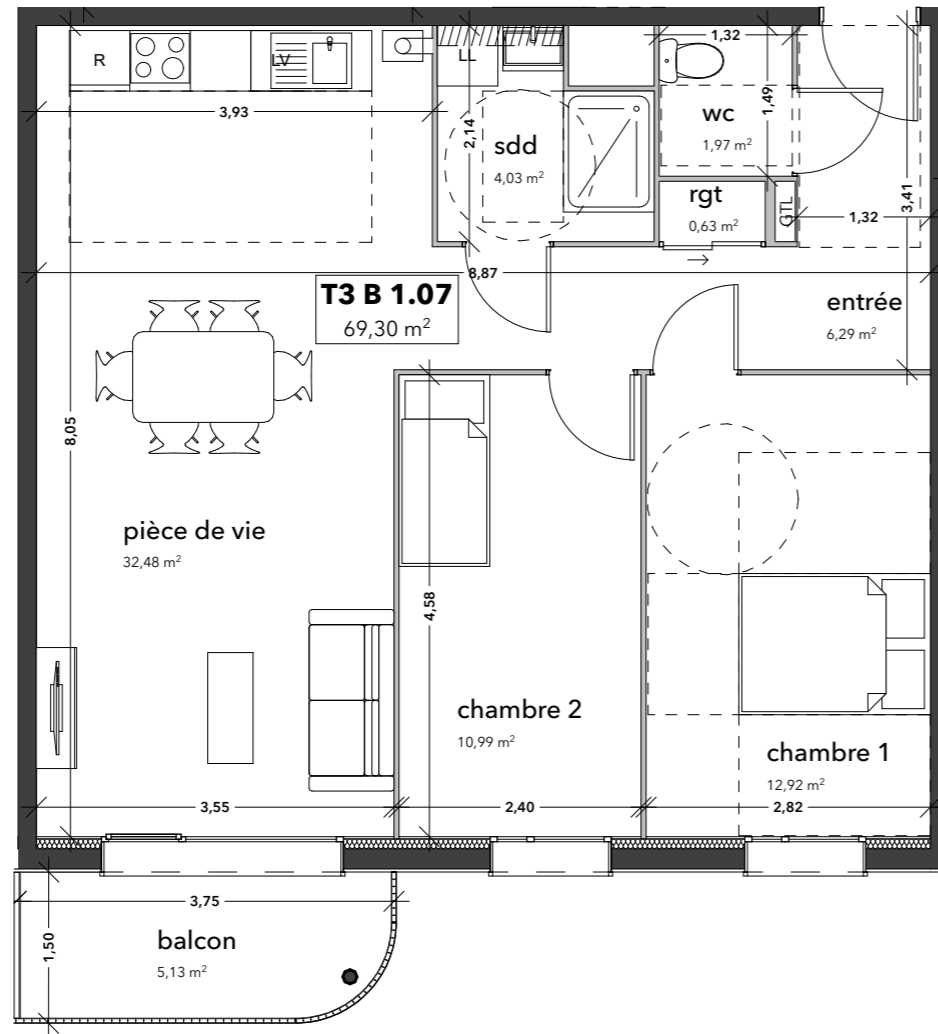


SITE FERRY

RUE EMILE ZOLA - 76360 BARENTIN

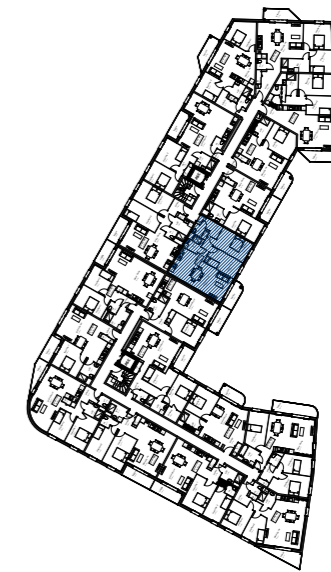


Ce plan est établi avant la mise au point technique de chantier qui pourra engendrer des modifications (dimensions, soffites, gaines, conduits...)



T3 N°B 1.07

Bâtiment B	Etage 1
------------	---------



Surfaces habitables		
chambre 1		12,92
chambre 2		10,99
entrée		6,29
pièce de vie		32,48
rgt		0,63
sdd		4,03
wc		1,97
		69,30 m²
Surfaces annexes		
balcon		5,13

Date : 14/05/2024